



# TBL/TBS

BLOWER-COIL UNITS  
REDUCED-FOOTPRINT, VERTICAL



## Models TBL / TBS: BIG ON FEATURES; SMALL IN SIZE



### Contractors

All TBL/TBS model blower-coil units are shipped completely assembled, reducing field-installation time and labor. All units are thoroughly inspected and tested prior to shipment, eliminating potential problems at startup. Motor wiring is brought to a junction box and terminated. The junction box is located on the outside of the unit casing, reducing electrical hook-up time.

A wide variety of fan-discharge configurations allow for increased flexibility and easier installation on the jobsite, resulting in cost reductions by eliminating expensive elbows, etc.

### Designers

The extensive variety of standard options available on the TBL/TBS units are where you find the versatility to fit any HVAC system designer's needs.

Options include: Mixing boxes with standard low-leak dampers, blow-thru electric heat with single-point power connection. All electric heat units are listed with ETL as an assembly and carry the cETL label.

High-efficiency motors, starters, disconnects and fusing mean easier coordination between mechanical and electrical trades. Coil options allow for 4 or 6-row cooling coils.

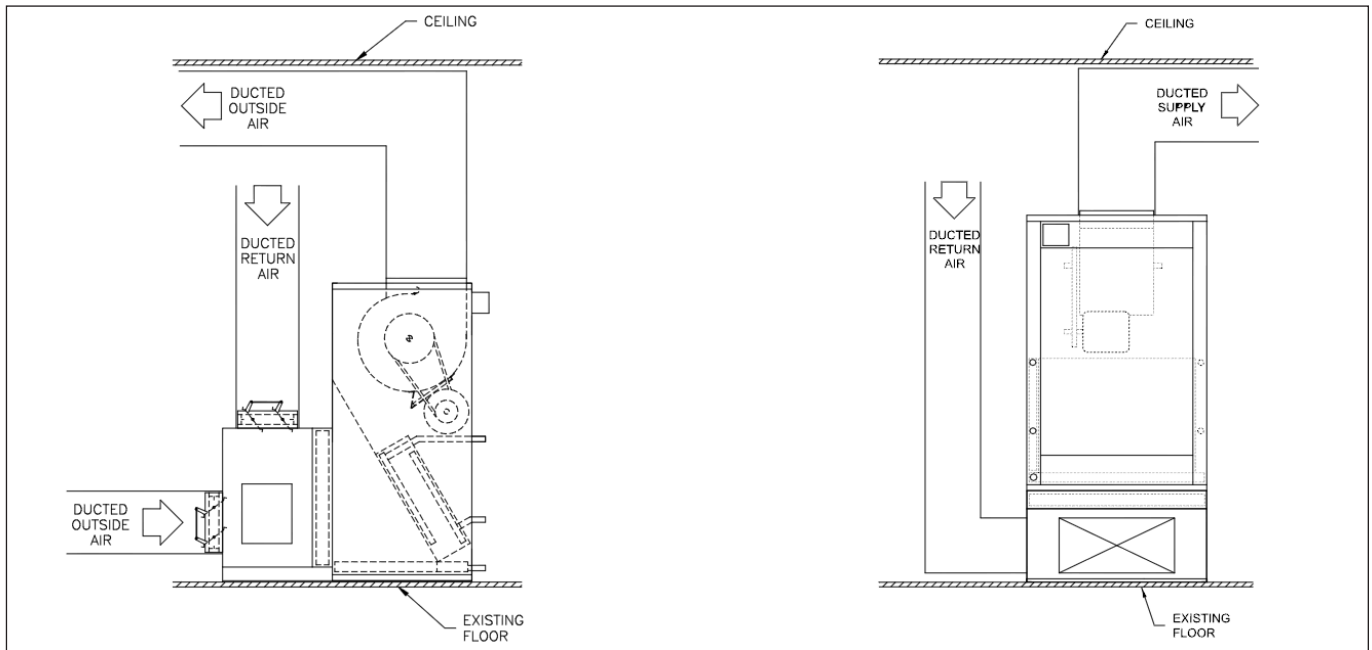
### Owners

TBL/TBS model blower coils are constructed from galvanized steel, surpassing the ASTM 125-hour, salt-spray test for corrosion and rust. Insulation, which is 1-inch thick, scrimreinforced, and foil-faced, is glued, pinned and taped for maximum adhesion. Insulation complies with UL 181, ASTM-C1071, NFPA 90A and 90B and meets bacteriological standard ASTM-C665 and C1136 for mold, mildew and humidity resistance.

All units, with or without electric heat, are cETL-listed and labeled. All wiring is in compliance with NEC, assuring safety and quality for the owner.



### Typical Installations

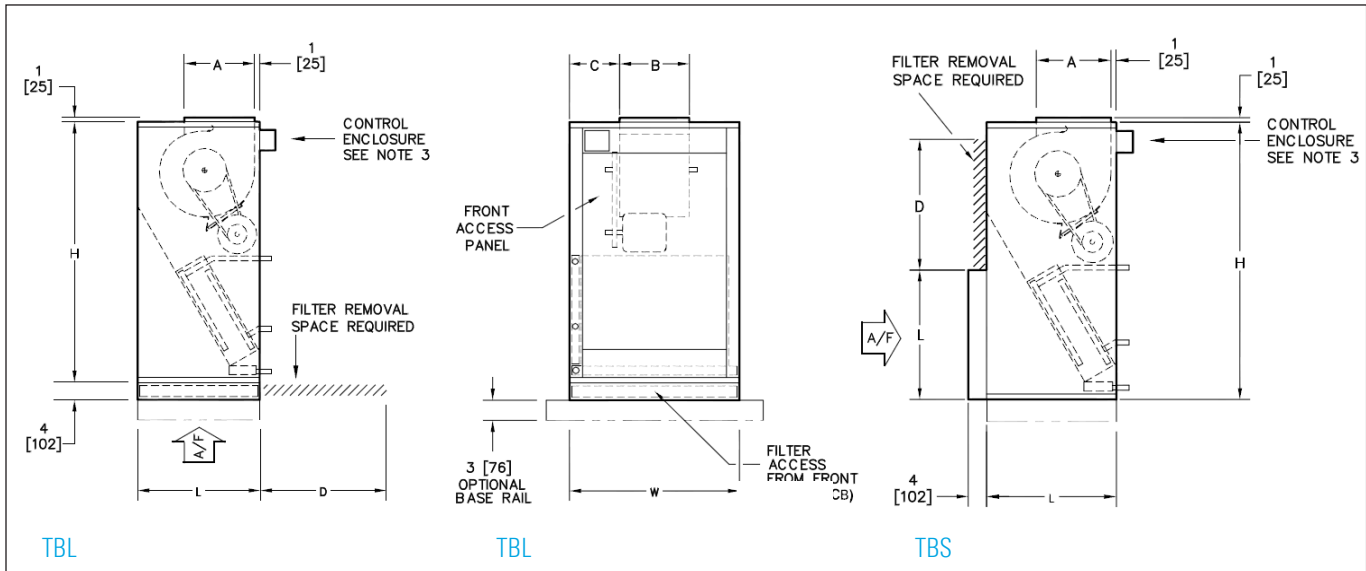


Model TBS, Rear Return with Mixing Box  
Mechanical Room Layout

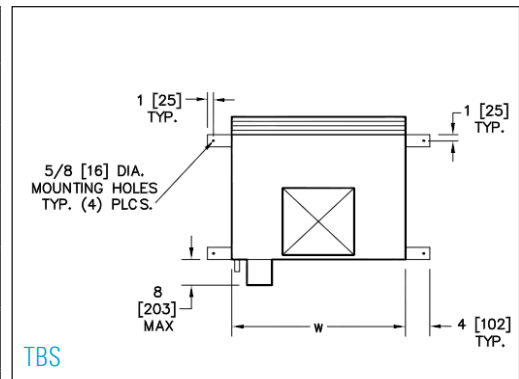
Model TBL, Bottom Return with Return Plenum  
Closet or Confined Space Layout

# Models TBL / TBS:

## DIMENSIONS, COIL & FILTER DATA



Unit Size	H	W	L	A	B	C	D
08	46 [1168]	26 [660]	19 [483]	6½ [165]	6⅞ [175]	9 <sup>9</sup> / <sub>16</sub> [243]	16 [406]
12	46 [1168]	26 [660]	21 [533]	7½ [190]	8¼ [210]	8 <sup>7</sup> / <sub>8</sub> [225]	20 [508]
16	54 [1372]	29 [737]	25 [635]	7½ [190]	10¼ [260]	9 <sup>3</sup> / <sub>8</sub> [238]	24 [610]
20	54 [1372]	29 [737]	28 [711]	11 <sup>1</sup> / <sub>8</sub> [289]	13¼ [337]	7 <sup>7</sup> / <sub>8</sub> [200]	24 [610]
25	60 [1524]	39 [991]	28 [711]	13½ [343]	12 <sup>7</sup> / <sub>8</sub> [327]	13 <sup>1</sup> / <sub>16</sub> [332]	24 [610]
30	60 [1524]	39 [991]	28 [711]	15¼ [387]	15 [381]	12 [305]	24 [610]



### Coil Face Area and Filter Data

Unit Size	Nominal CFM	Internal Cooling and Heating Coils	Discharge Section Heating Coils	2" Filters (Quantity) and Size	Filter Face Area
08	800	2.1 [0.20]	2.1 [0.20]	(1) 16" x 20" x 2" [406 x 508 x 51]	2.2 [0.20]
12	1200	2.8 [0.26]	2.1 [0.20]	(1) 20" x 20" x 2" [508 x 508 x 51]	2.8 [0.26]
16	1600	3.6 [0.33]	3.2 [0.30]	(1) 24" x 24" x 2" [610 x 610 x 51]	4.0 [0.37]
20	2000	4.8 [0.45]	3.2 [0.30]	(1) 24" x 24" x 2" [610 x 610 x 51]	4.0 [0.37]
25	2500	5.7 [0.53]	4.6 [0.43]	(1) 24" x 24" x 2" [610 x 610 x 51] (1) 12" x 24" x 2" [305 x 610 x 51]	6.0 [0.56]
30	3000	6.8 [0.63]	5.7 [0.53]	(1) 24" x 24" x 2" [610 x 610 x 51] (1) 12" x 24" x 2" [305 x 610 x 51]	6.0 [0.56]

#### Notes:

- Standard filters are 2" throwaway; optional filters are 2" pleated
- Filter sizes are nominal and standard size, measured in inches [mm]
- Coil and filter face areas are measured in square feet [square meters]

#### Notes:

- All dimensions are inches [mm] and are +/- ¼" [6mm]  
Metric values are soft conversions
- Motor/drive location may be specified Left or Right Hand. Standard control-enclosure location matches motor/drive position.
- Provide sufficient clearance to access electrical controls and comply with all applicable codes and ordinances
- Maximum total internal coil rows: 6
- Left-hand unit shown; right-hand unit has CW and HW piping connections mirrored
- Filter assembly runs the full length of the unit size
- Drawings not for installation purposes

Note: Drawings are not to scale and are not for installation purposes. Contact your Titus representative for more information. All data and dimensions are subject to change without notice.

## Models TBL / TBS: BLOWER-COIL UNIT FEATURES

### Standard Features:

#### Construction

- » Galvanized-steel cabinet construction, minimum 18 gauge
- » 1"-thick, 1.6-lb/ft,3 scrim-reinforced, foil-faced insulation, glued, taped and pinned in place
- » 1" supply duct collars
- » Gasketed, removable access panel sized for easy handling
- » Galvanized-steel drain pan with 1-1/8" ODM copper pipe outlet
- » Left- and right-hand arrangement

#### Fan Assembly

- » Forward-curved (double-width, double-inlet) fans
- » Statically and dynamically balanced
- » Solid steel shafting
- » Ball bearings with a minimum design-average life ( $L_{50}$ ) of 100,000 hours

#### Fan Motor and Drive

- » NEMA-design ODP motors
- » 1750 RPM, single-speed, 60 Hertz
- » Single-phase motors with inherent thermal protection
- » Three-phase motors
- » Rigid-mount, adjustable, motor base
- » Standard cross-section "V-belt" drive with 1.2 service factor
- » Adjustable-pitch motor pulley and fixed-pitch blower pulley

#### Coils

- » AHRI Standard 410-certified and labeled
- » 1/2" O.D. seamless copper tubes
- » Collared and corrugated aluminum fins
- » Manual air-vent plug on all water coils
- » 300 PSIG working pressure at 200°F
- » Steam coils rated at 15 PSIG maximum
- » Copper ODM sweat connections
- » 0.016" tube wall on water and evaporator coils
- » 0.025" tube wall on steam coils
- » High-efficiency, aluminum-fin surface for optimizing heat transfer, pressure drop, and carryover

#### Filters and Filter Rack

- » Top-access, flat-filter rack (ACR only)
- » Front-access filter rack (ACB only)
- » Standard-size, 2" nominal, throwaway filters

#### Electrical

- » Fan motor wired and terminated to J-box
- » All units ETL-listed in compliance with UL/ANSI

### Optional Features:

#### Construction

- » Stainless-steel drain pan with 1" MPT galvanized pipe outlet
- » External rubber-in-shear or spring-type vibration isolators, floor mount
- » Fan-discharge arrangements
- » Discharge plenum w/dbl.-deflection discharge grille
- » Access panel with lift-and-turn fasteners
- » Double wall access panel w/lift-and-turn fasteners
- » Return plenum with removable panels (ACB only)
- » Base rails with rigging slots, factory-assembled and installed

#### Fan Motor and Drive

- » TEFC motors
- » High-efficiency motors

#### Coils

- » 4 and 6-row chilled-water or R-22 DX coils
- » 1 and 2-row hot-water coils
- » 1 and 2-row hot-water or standard-steam coils in discharge-coil section only
- » Hot-water coil in preheat or reheat position
- » Stainless-steel coil casings
- » 0.025" tube wall on water and evaporator coils
- » Auto air vents on water coils

#### Filters and Filter Rack

- » Side-access filter rack (ACR only)
- » 2" pleated filter (MERV 6)
- » Spare throwaway or pleated filters

#### Inlet-Damper Section (ACR rear-return unit)

- » Factory-assembled and installed
- » Heavy-gauge, galvanized-steel, formed blade dampers
- » Low-leak dampers with extruded-vinyl blade seals and flexible-metal jamb seals
- » Parallel-blade operation
- » Interconnecting damper linkage

#### Electrical

- » Motor wiring in conduit
- » Motor starter (contactor with overload for three-phase; contactor for single-phase), factory-installed (mounted and wired)
- » Door-interlocking disconnect switch (non-fused) (with main fusing)
- » Hand-off-auto switch (HOA)
- » Main fusing

#### Electric-Heat Section

- » Factory-mounted electric heater with single-point power connection, ETL-listed as an assembly

Notes

---

## Notes

---

## Notes

---



605 Shiloh Road  
Plano TX 75074  
office: 972.212.4800  
fax: 972.212.4884

Redefine your comfort zone.™ | [www.titus-hvac.com](http://www.titus-hvac.com)

 **Titus**  
Redefine your comfort zone.™